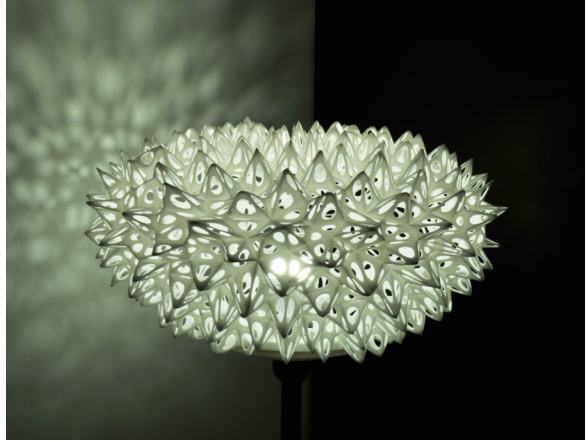




# EP-P3850

## SELECTIVE LASER SINTERING 3D PRINTER

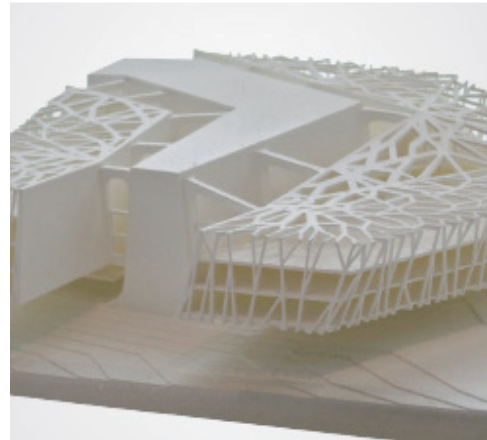




E-Plus 3D EP-P3850, adopts selective laser sintering (SLS) technology is designed to meet functional tests in industrial applications at an affordable price. With the build size of 380 x 380 x 500 mm, EP-P3850 covers the medium build volume range and delivers high-property thermoplastics.

#### FEATURES & BENEFITS:

- Detachable forming cylinder to optimize printing efficiency
- Uniformed heat control system to offer optimized mechanical properties
- Offer broad portfolio of 3D printing materials with high powder recyclability rates
- Break the constraints of complex geometries, and maximize design freedom



# TECHNICAL SPECIFICATIONS

## EP-P3850

Model	EP-P3850
Material	PA11, PA11CF, PA12, PA12GF
Build Volume	380 x 380 x 500 mm
Layer Thickness	0.1 mm ( 0.08-0.3 mm to choose )
Build Accuracy	±0.15 mm ( part size ≤100 mm ) , ±0.15% ( part size ≥100 mm )
Material Feed Mode	Automatic loading, bi-directional powder feeding
Laser Power	CO <sub>2</sub> laser, 55 w
Scanning System	Dynamic scanning focus
Scanning Speed	7.8 m/s (max)
OS System Support	Windows 7
Control Software	Eplus 3D printing software
Air Supply	Compressed air, N <sub>2</sub> protective gas
Power Supply	380 v, 50 Hz, 3-phase
Output Data Format	STL or other convertible file
Dimension	1400 x 1300 x 2450 mm ( L x W x H )
Machine Weight	1600 kg
Work Temperature	15-30 °C

\*Notice: E-Plus 3D reserves the right to explain any alteration of the specifications and pictures.